

2024

Selected work

Eka Barbakadze

Architecture | Interiors

portfolio

01 Athens Riviera apartment
Interior design project, Athens, 2024

02 Black hills House
Family house project in South Dakota, 2024

03 Bathroom design
Bathroom renovation, Georgia, Racha, 2024

04 Conceptual design
Private house projects, 2022-2023

05 Kitchen visualization
Tbilisi, Georgia, 2023

06 Isometric renders
Tbilisi, Georgia, 2024

07 Tiny mirror house
Romania, 2024

08 Furniture design
2024

09 Drawings/Modular containers
Kitchen technical drawings, Tbilisi, Georgia, 2023
Tiny coupled house planning, Romania, 2023
Tiny modular office project, Romania, 2023

10 Miscellaneous
Personal work 2020-2023

01

Athens Riviera Apartment

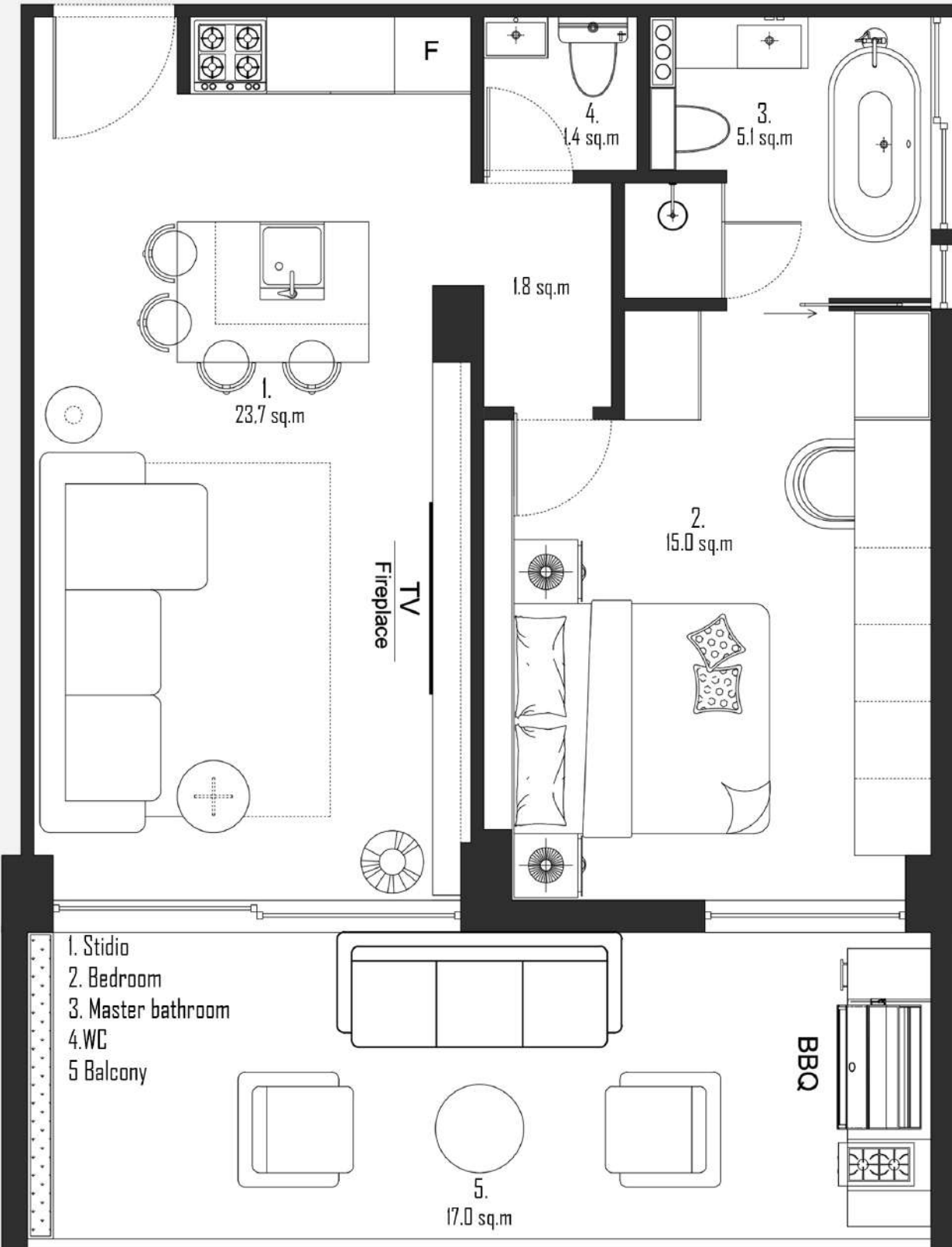
AutoCad, 3ds max, V-Ray, Photoshop



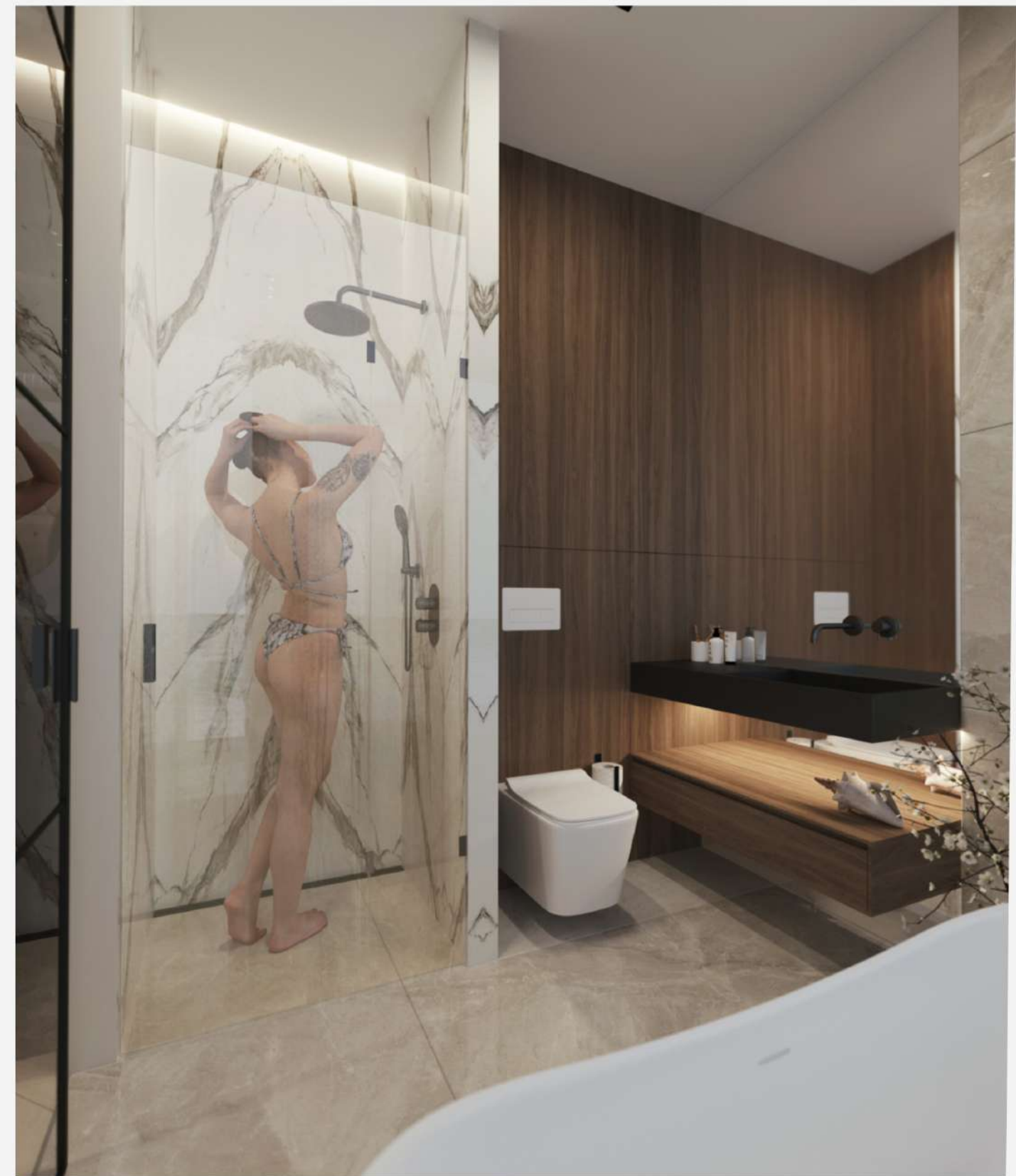
A Walkthrough

This renovation project of an old apartment in Athens beautifully captures the essence of minimalist design. By reducing forms and colours to their simplest states, we created airy, bright, and charming space. The colour palette comprises light and soft natural shades, such as cold and warm beige tones. Using Natural materials like dark walnut wood and marble create sense of elegance and coziness. Apartment contains a combined kitchen and living space, one bedroom and two bathrooms.

Layout







Athens Riviera Apartment

02

AutoCad, D5 Render, Photoshop

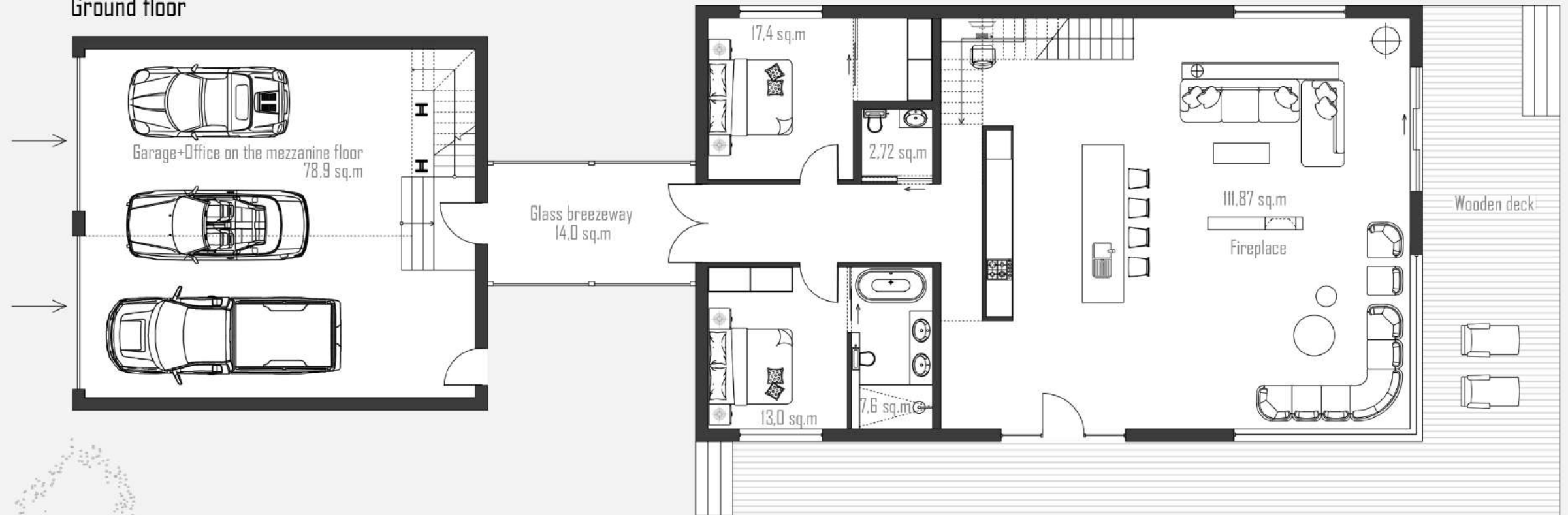
Black Hills House



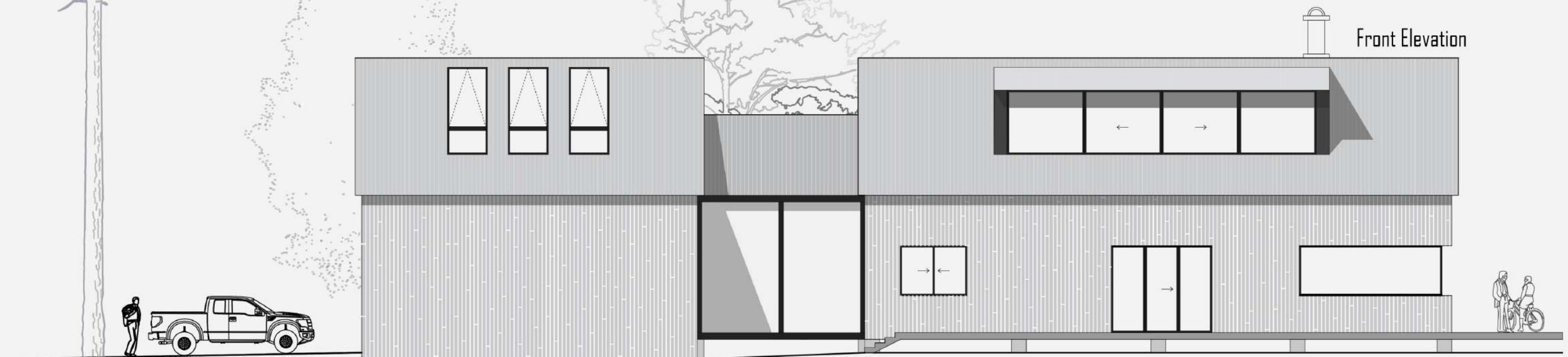
A Walkthrough

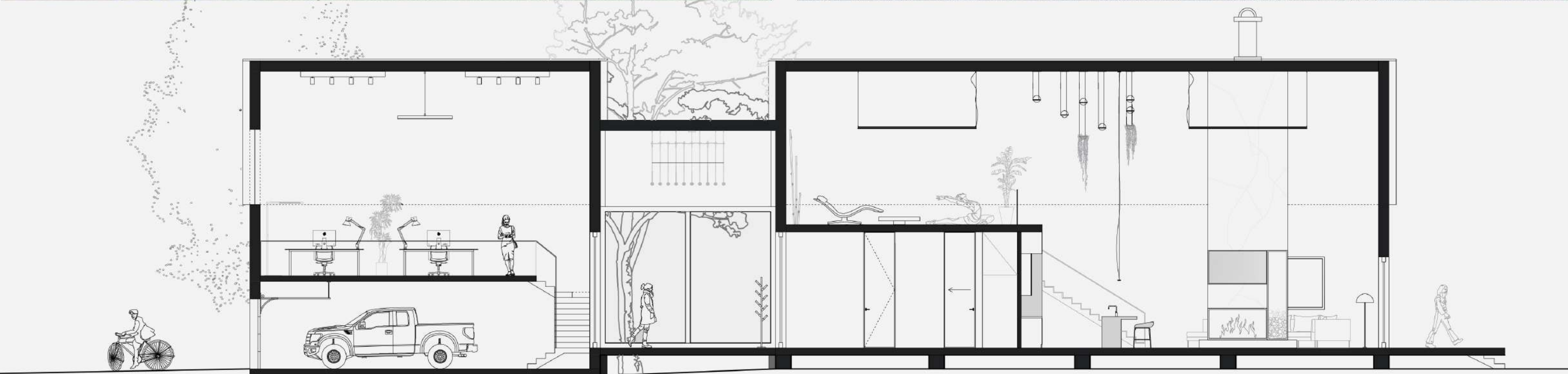
The project is situated in the Black Hills of South Dakota, USA. Spanning 260 square meters, the ground floor comprises two primary sections: a garage and a living area, linked by a glass breezeway. Within the residential section are two bedrooms, bathrooms, and a spacious living space. Due to the considerable height of the building, mezzanine spaces have been incorporated into both sections, serving specific purposes such as offices and leisure areas. Due to the prevalent heavy downfall in the area, roofs have been utilized with steeper slopes. The color scheme of the project draws inspiration from the mountain's name and is entirely represented in black.

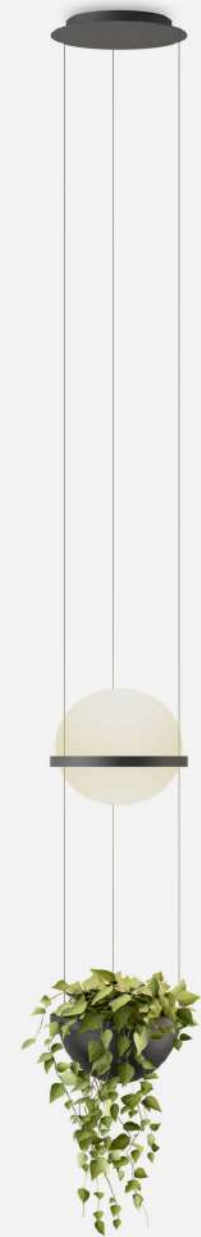
Ground floor



Front Elevation







The interior incorporates natural materials, including rough concrete, plywood and marble, which create a cozy yet refined atmosphere. In contrast to the exterior, the interior space features a palette of light colors. Vibia's beautiful pendant lights offer a unique aesthetic to the space.

03

Bathroom Renovation project

AutoCad, 3ds max, Photoshop



A Walkthrough

The primary goal for this project was to bring the interior design into harmony with the breathtaking nature of Racha and to create a maximally comfortable space for relaxation, incorporating rural elements, naturalness, airiness, and simplicity, while also evoking a sense of sophistication.

The interior features beautiful marble slabs with green details, which creates elegant atmosphere in the bathroom, in contrast using of green tiles and limewash painting adds a calm and vintage touch to the space. The incorporation of natural stones and plants around the bathtub, invite the essence of nature, while the Flos Viscontea chandelier's warm lighting adds a touch of coziness to the bathroom.



Limewash paint



Marble





Painted concrete

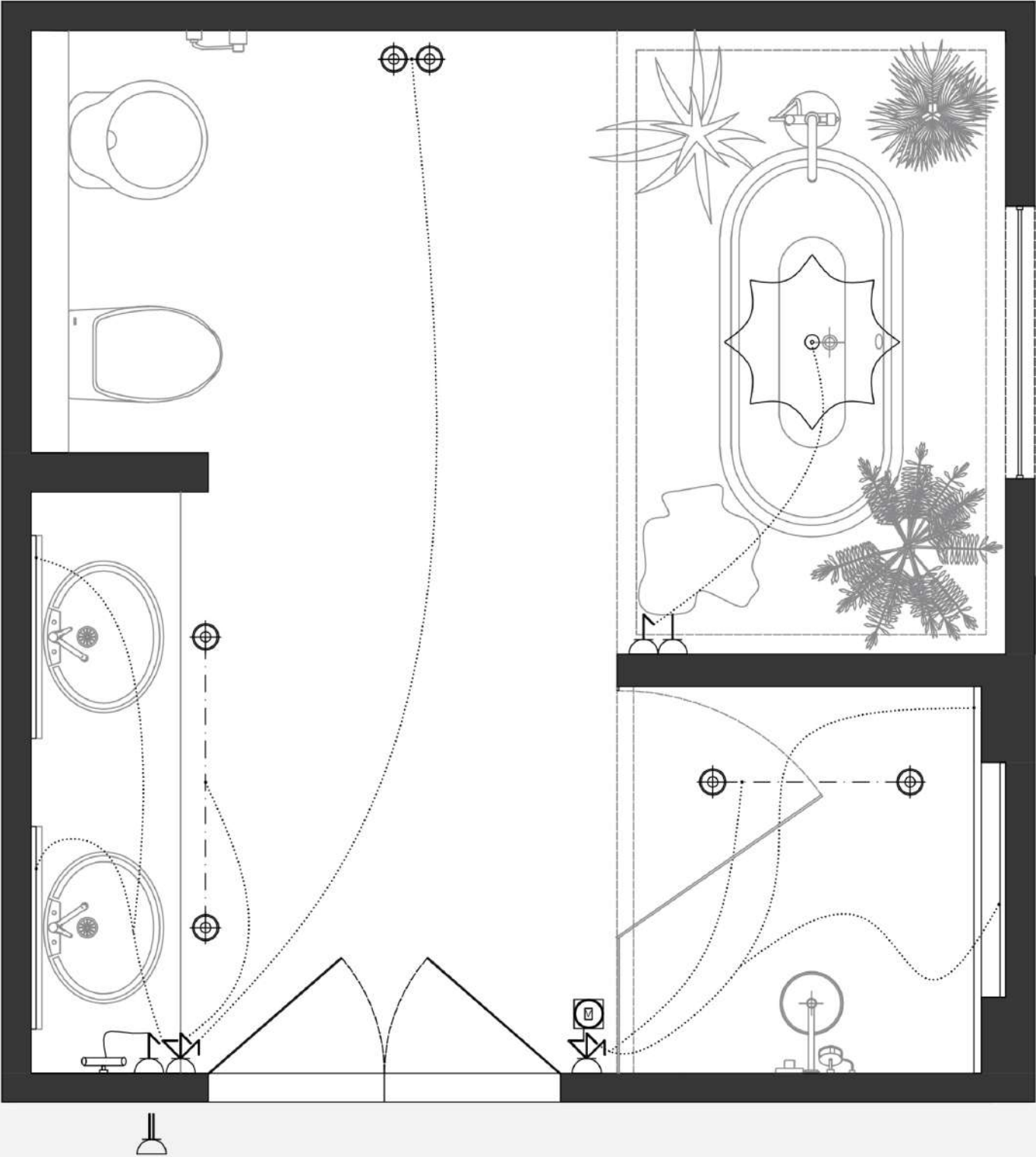


Marble

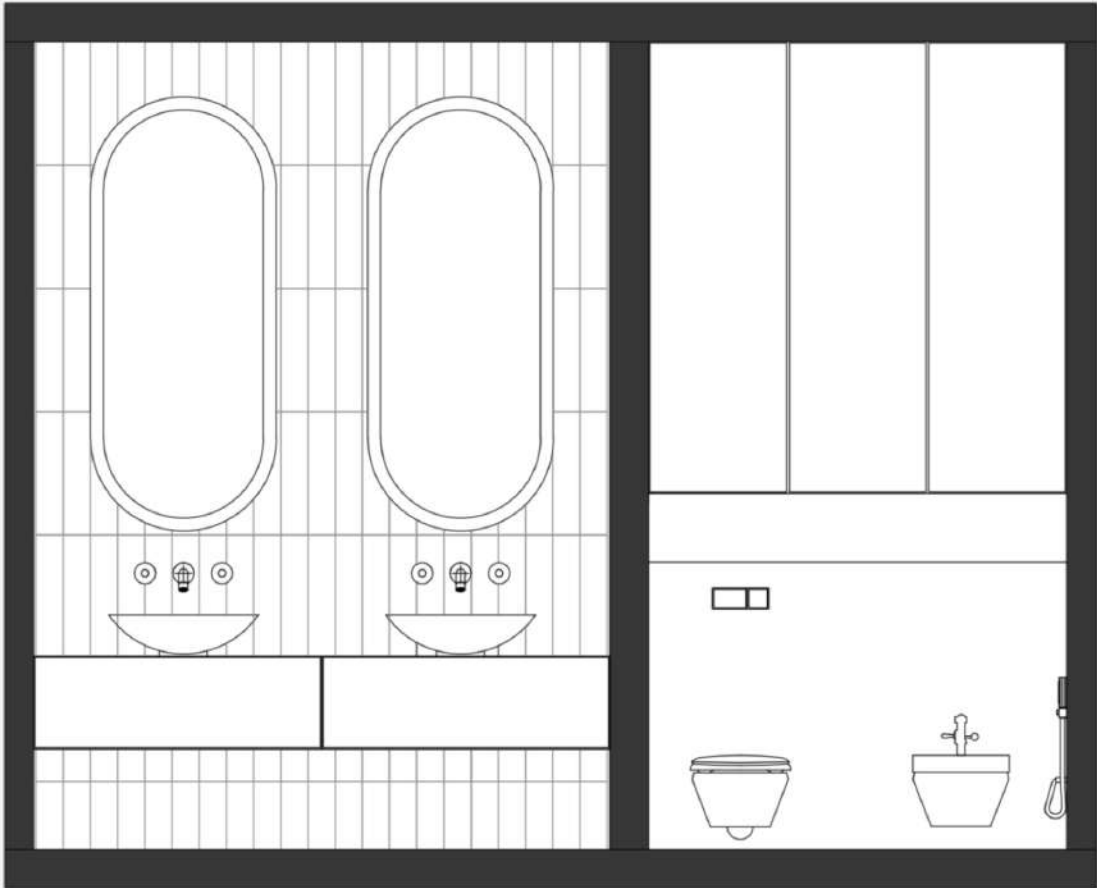


Electricity plan

	Chandelier
	Built in spot light
	1 gang switch
	2 gang switch
	3 gang switch
	Ventilation
	Led light



E
l
e
v
a
t
i
o
n
s





04

Conceptual Designs

AutoCad, Archicad, 3ds max, vray, Photoshop

Private house project

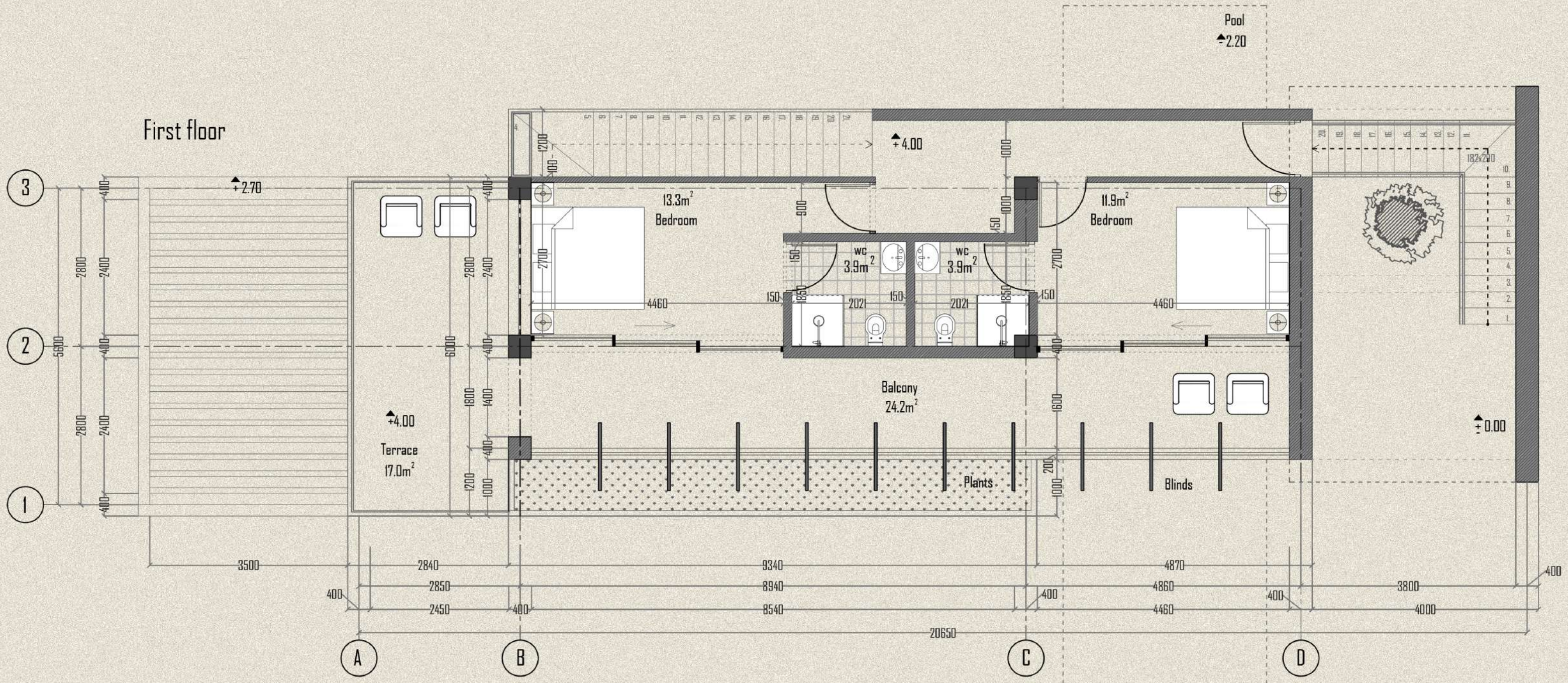


A Walkthrough

The two-story house project encompasses a total area of 130 square meters, featuring a studio, two bedrooms, and independent bathrooms. The second floor includes a terrace and balcony, which is equipped with wooden blinds. Along the balcony there's a special space for plants to bring a sense of freshness and naturalness to the design. The House also includes an open parking space for one car and a swimming pool, which is partially located under the extended section of the second floor. The outside staircase provides access from the pool area to the upper level. Adding the cypress tree in the relaxation area enhances the feeling of harmony and inseparable connection with nature.





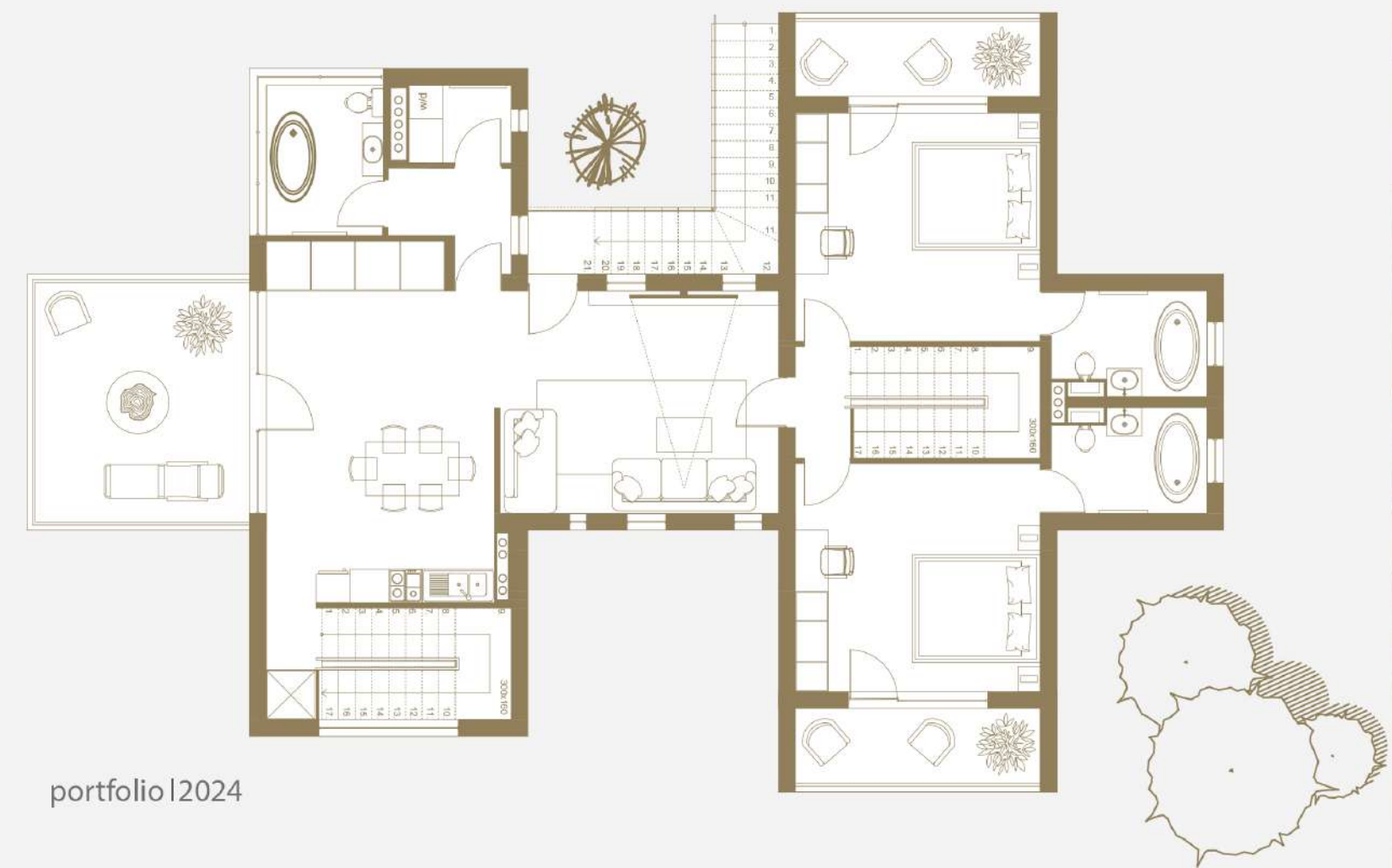
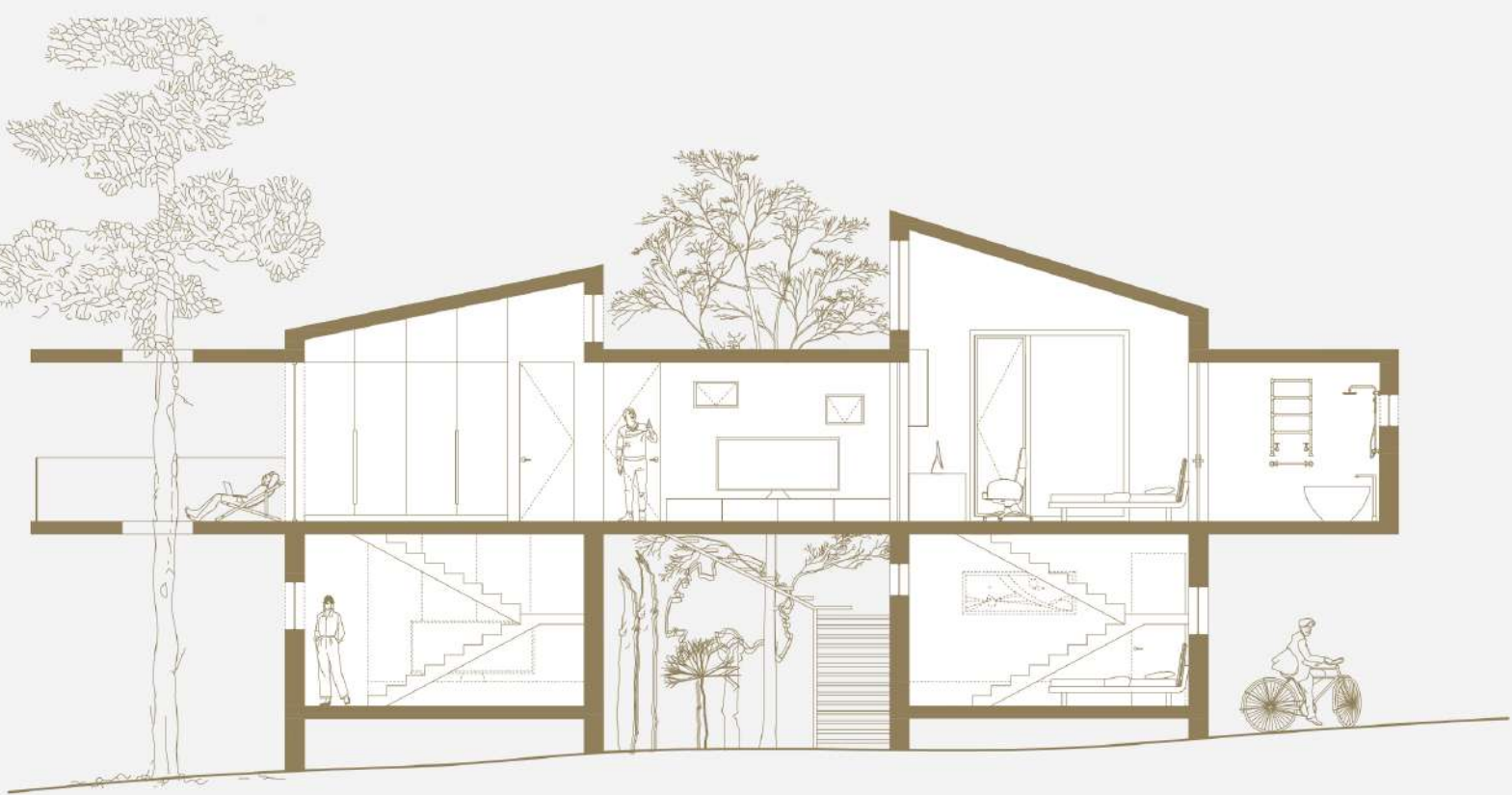




House in the Woods

A Walkthrough

The design concept aims to establish a residential house that offers a retreat from the hustle and bustle of daily life, nestled within a forest. The two-story structure includes a living area, kitchen, three bedrooms, a home office, and necessary wet areas. Its layout is derived from the intersection of three rectangles. In the design, particularly within the living area, materials such as concrete, wood, brick, and white walls are utilized. This blend of materials imparts a vintage aesthetic to the building, especially highlighted by the rough brick that adds a sense of imperfection. The incorporation of black-and-white soft furnishings creates a contrasting ambiance between the kitchen and the living area, which are partially divided by a geometric wooden partition.





Concrete



Timber



Plywood



Rough brick





Transparent House

A Walkthrough

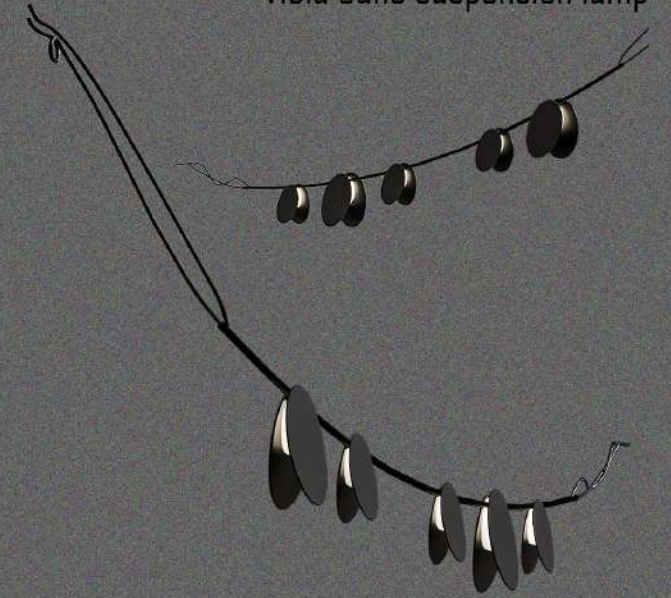
Conceptual design of a residential space, which is entirely transparent, covers 114 square meters. The interior design deliberately excludes partition walls, except for the wet area, in order to maintain an open space without any obstacles. The certain combination of rectangular and triangular shapes gives an opportunity to incorporate a tree on the terrace, which enhance the overall look of the house. A water mirror is arranged on the terrace, reflecting the silhouette of the building and giving a sense of lightness. The main inspiration for the design came from Philip Johnson's famous glass house.



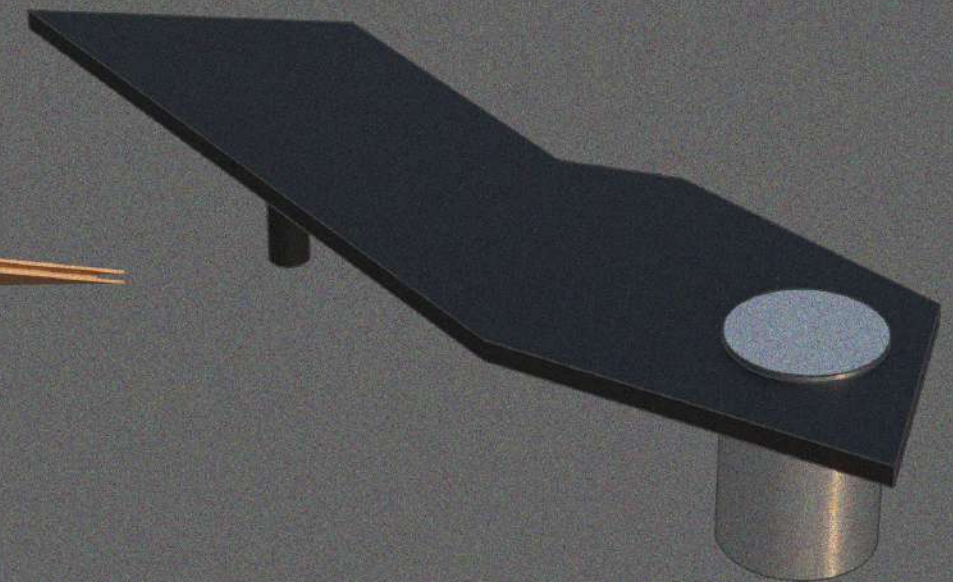
Liberty lounge



Vibia June suspension lamp



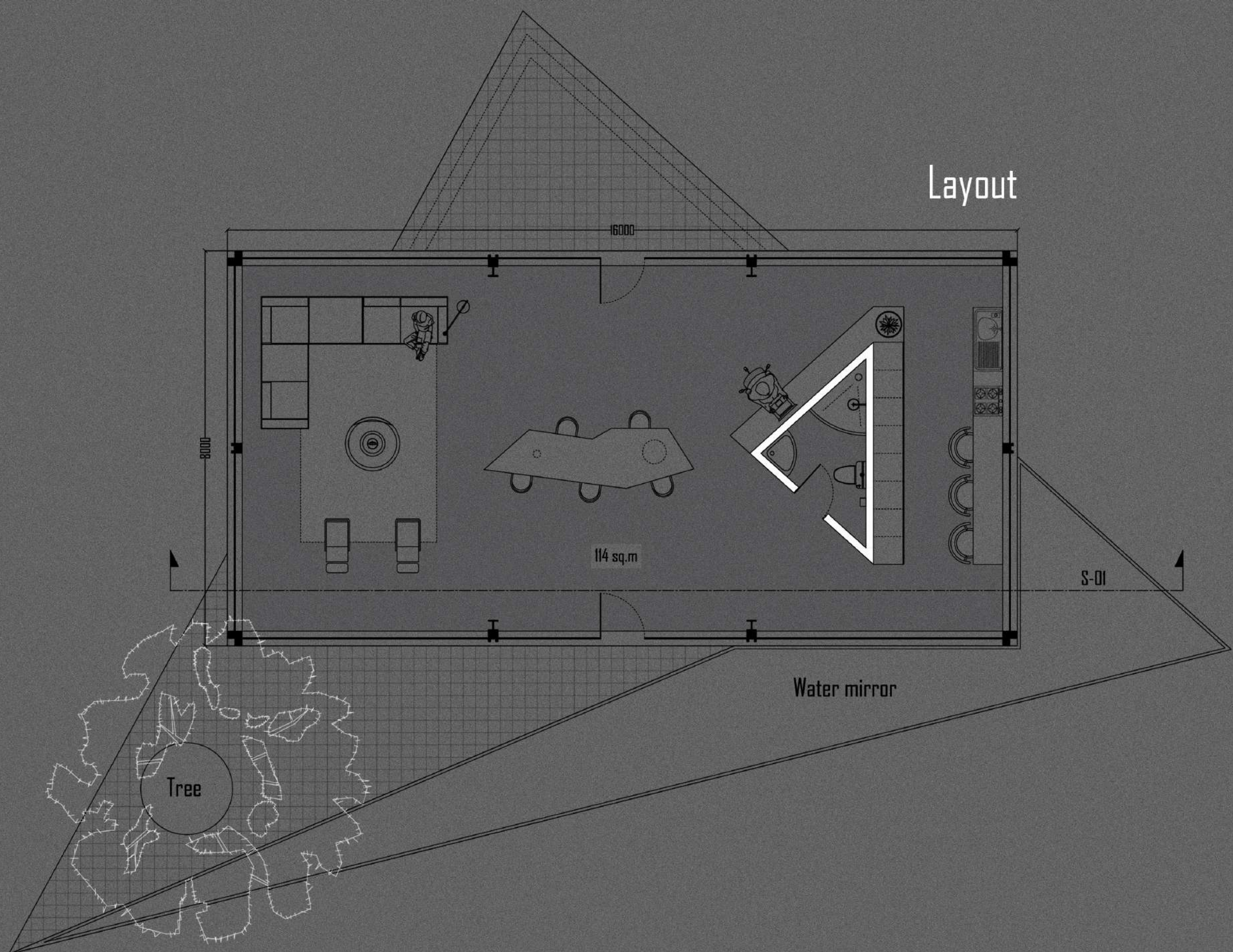
Special design



Boca Navi sofa



Layout



S-01

± 3.80
± 3.50

± 0.00
- 0.40

5233

5234

5233

15700

A

B

C

D

05

Kitchen visualization

3ds max, V-Ray, Photoshop



. A combination of modern and ethnic style kitchen is modeled & rendered in 3ds Max+V-Ray and post-processed in Photoshop .



Kitchen Visualization #05

06

Isometric renders

Archicad, 3ds max, V-Ray, Photoshop

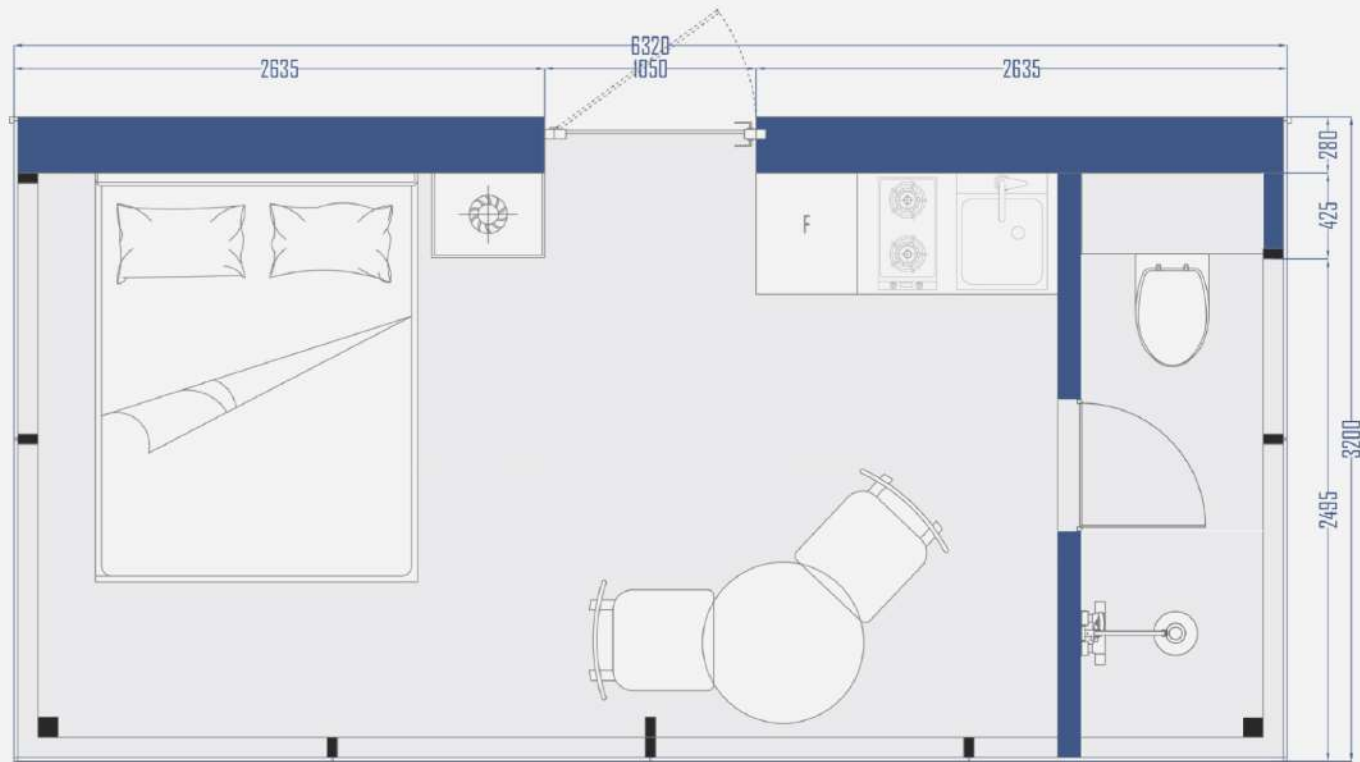




07

Tiny Mirror House

Autocad., 3ds max, V-Ray, Photoshop



A Walkthrough

This eco-friendly mobile tiny-house covers 20.2 square meters and includes a studio, a fully equipped kitchen, and a bathroom. Its design incorporates mirrored facades on three sides, allowing it to seamlessly blend into the surrounding natural environment. The interior showcases an elegant combination of natural wood and marble tiles.





Tiny mirror house #07



08

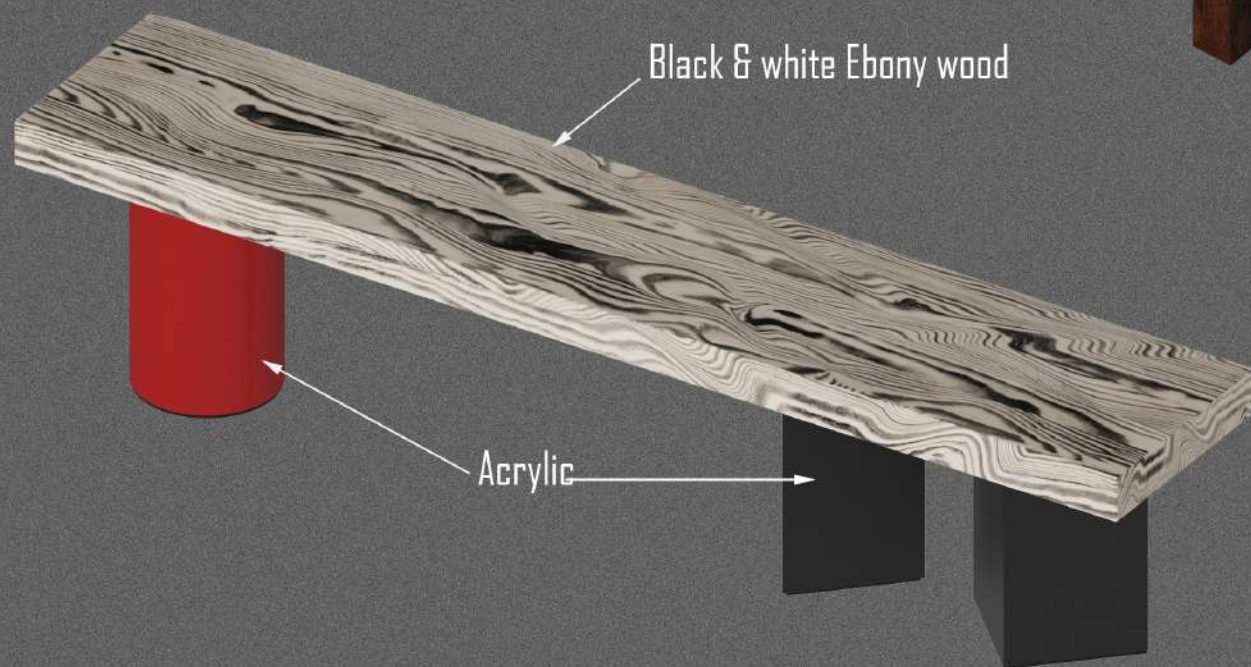
Furniture design

Sketchup 3ds max,V-Ray, Photoshop

Bench Design

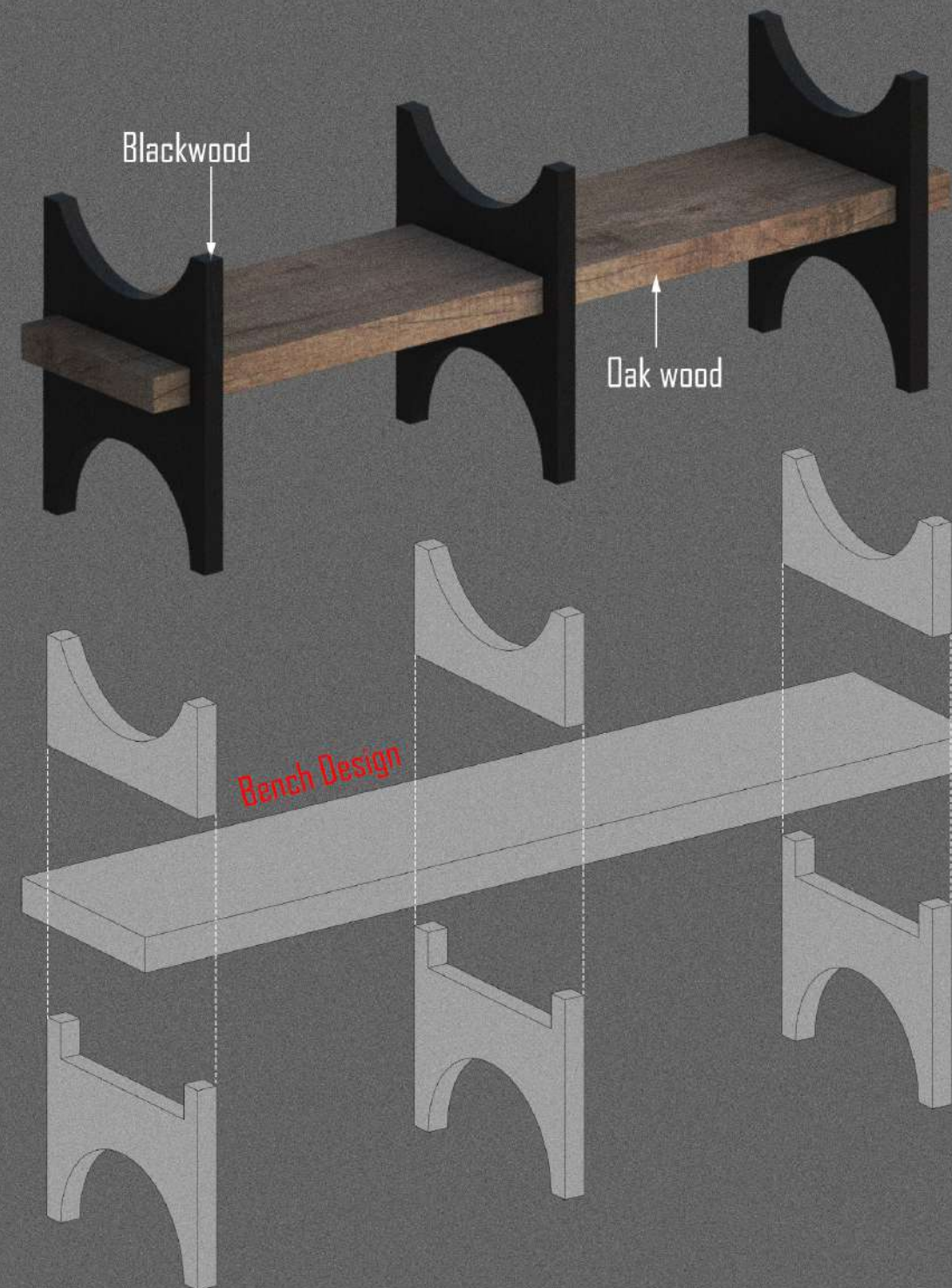


Chair design



Black & white Ebony wood

Acrylic

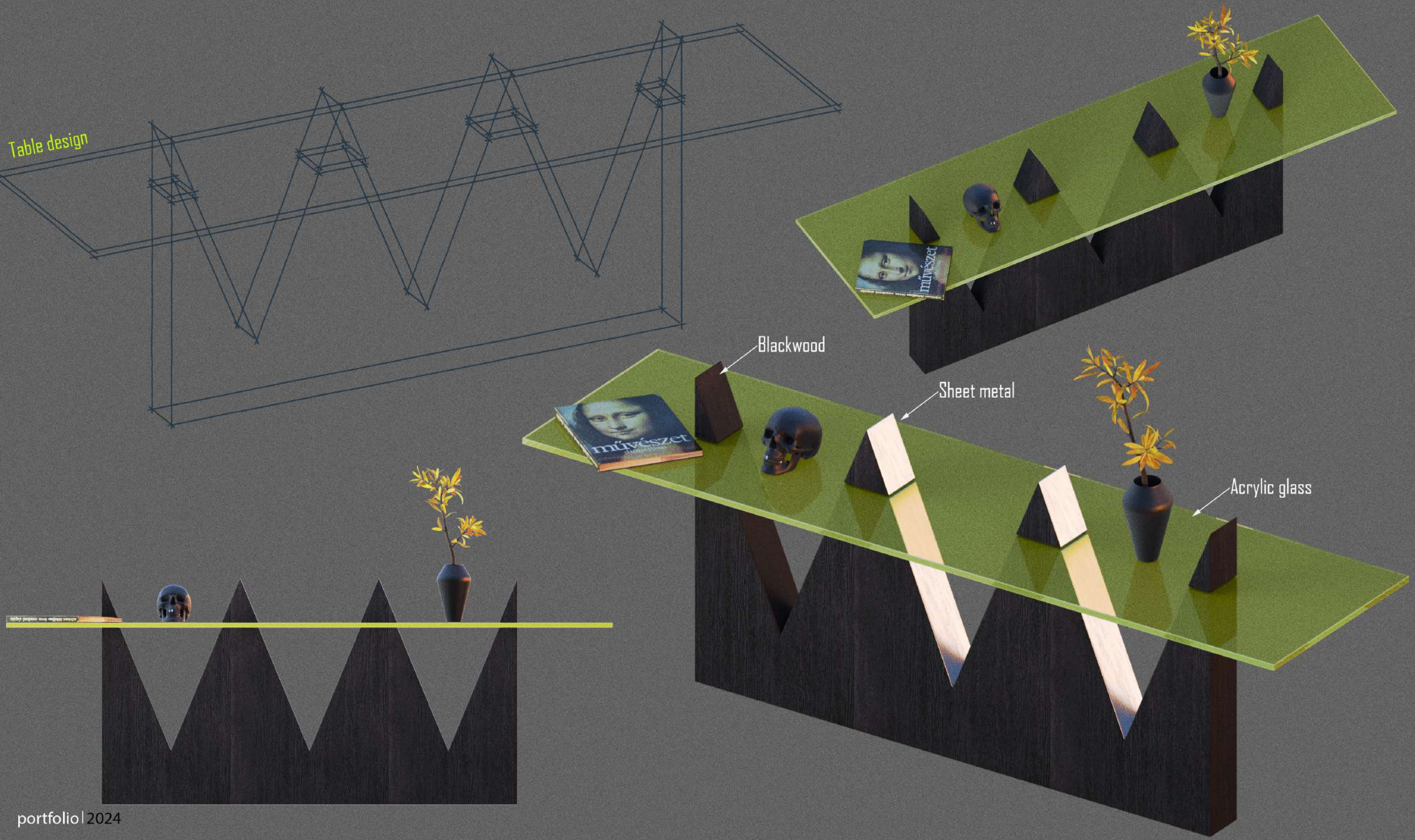


Blackwood

Oak wood

Bench Design

Table design



Blackwood

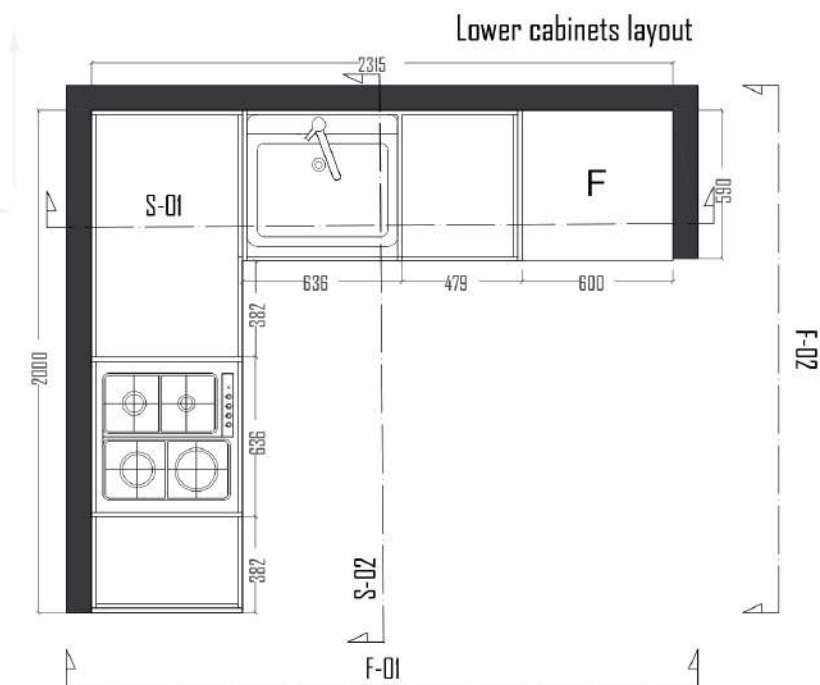
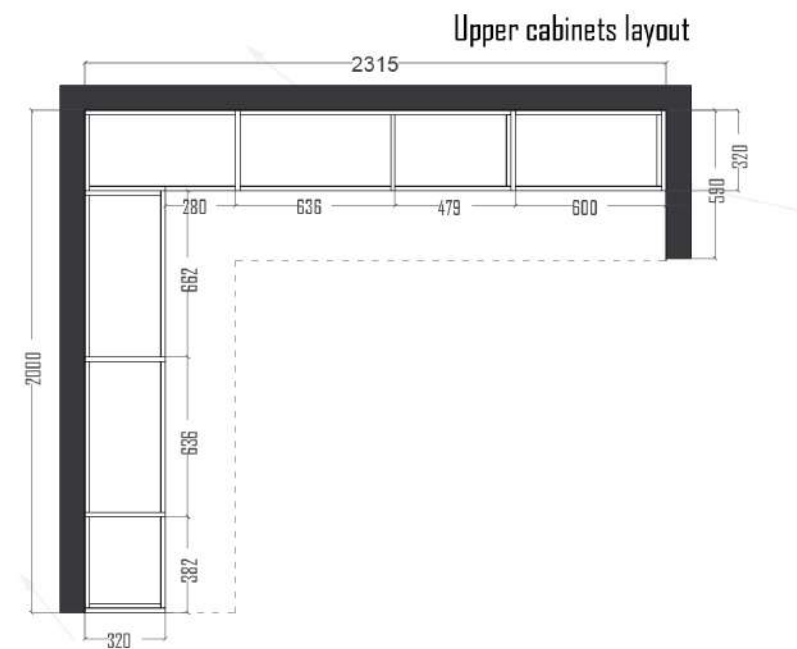
Sheet metal

Acrylic glass

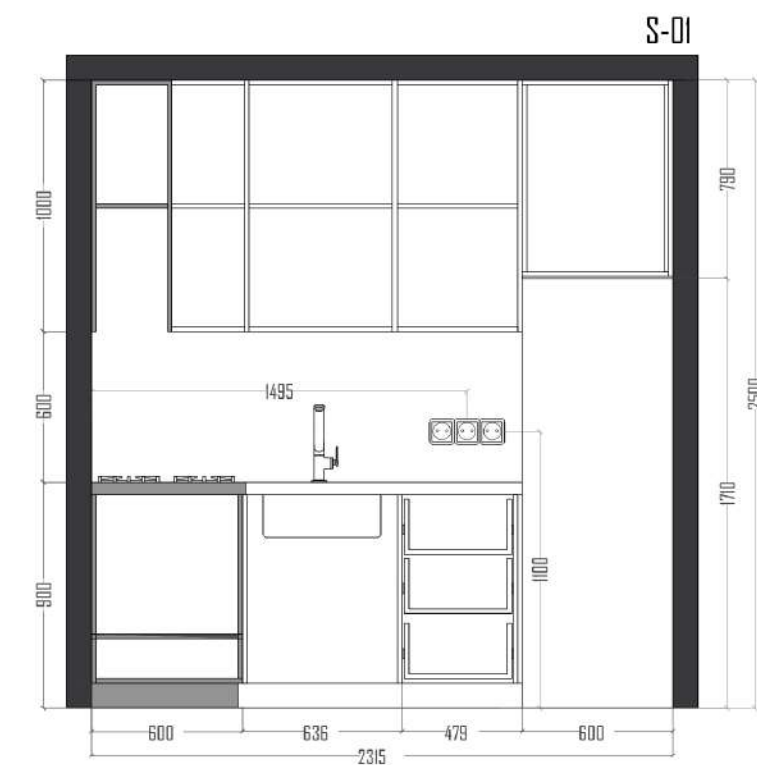
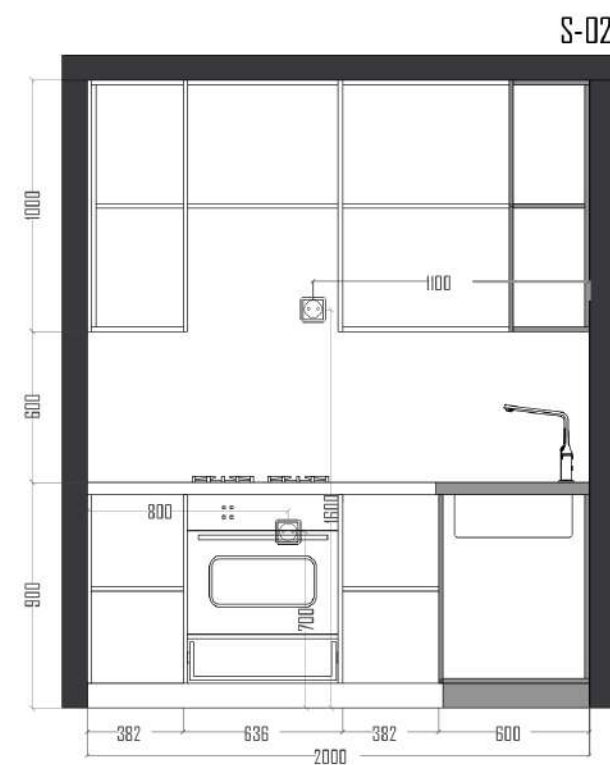
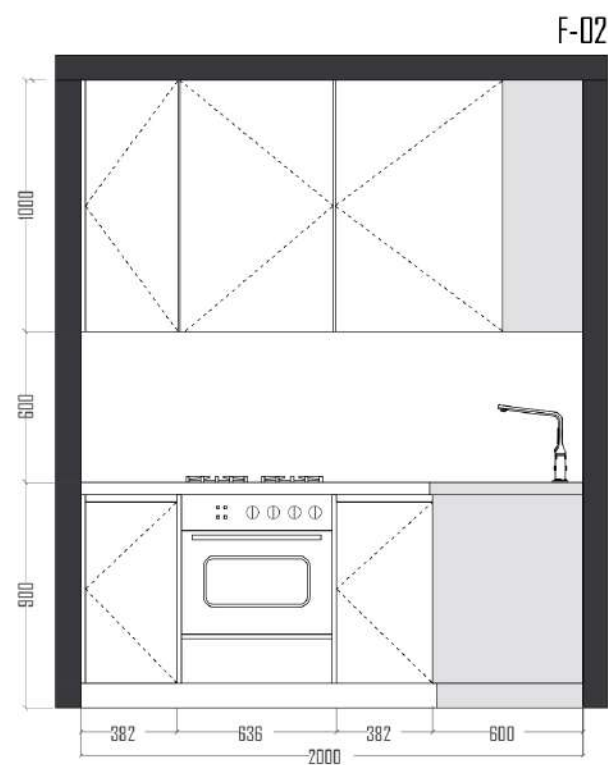
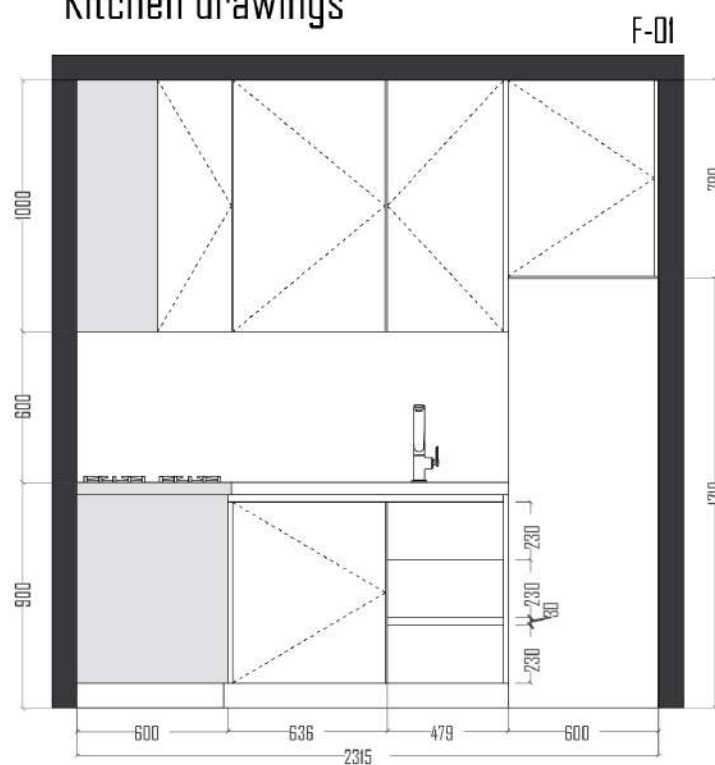
09

Drawings/Modular containers

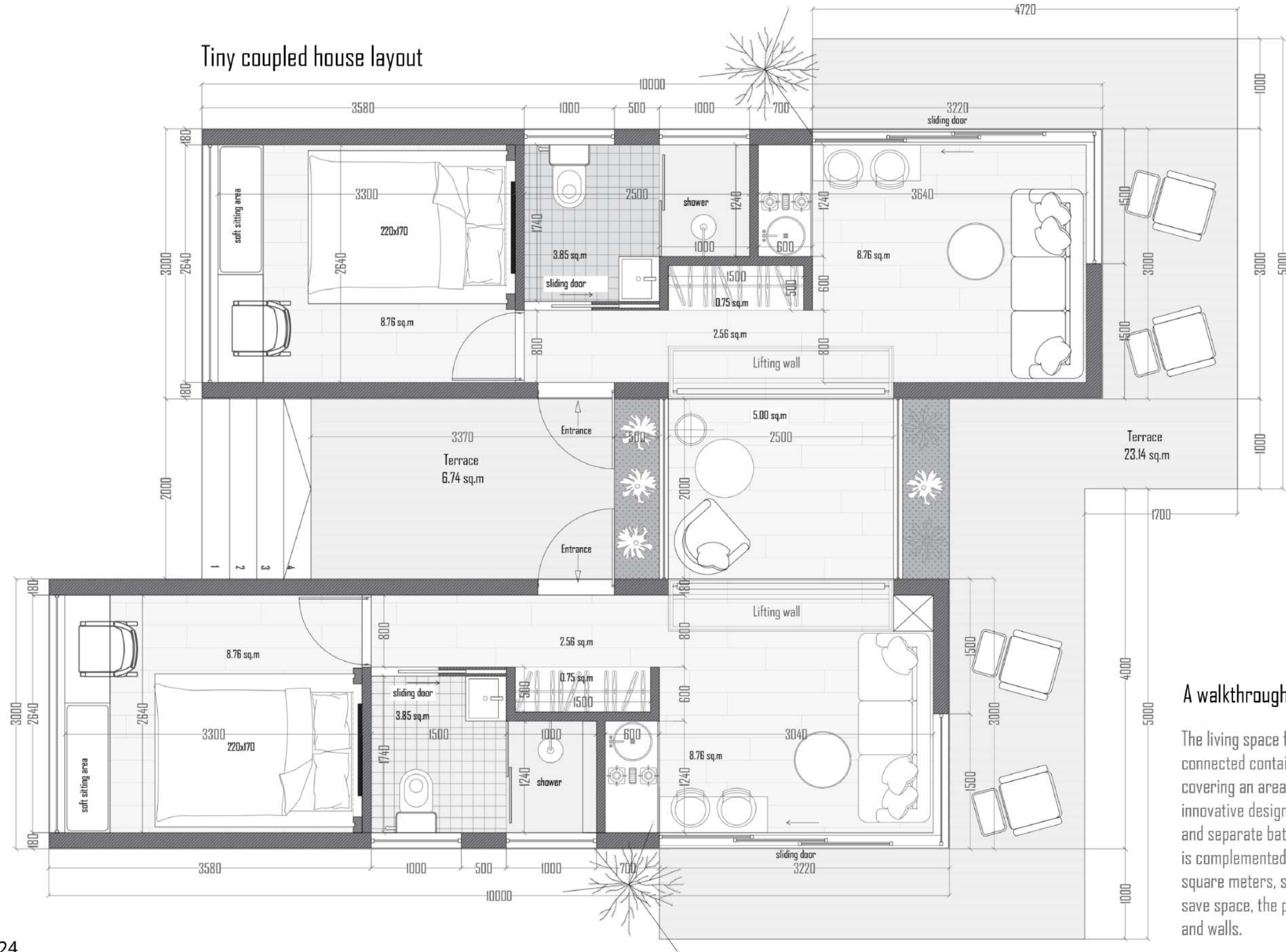
AutoCad, 3ds max, V-Ray, Photoshop



Kitchen drawings



Tiny coupled house layout



A walkthrough

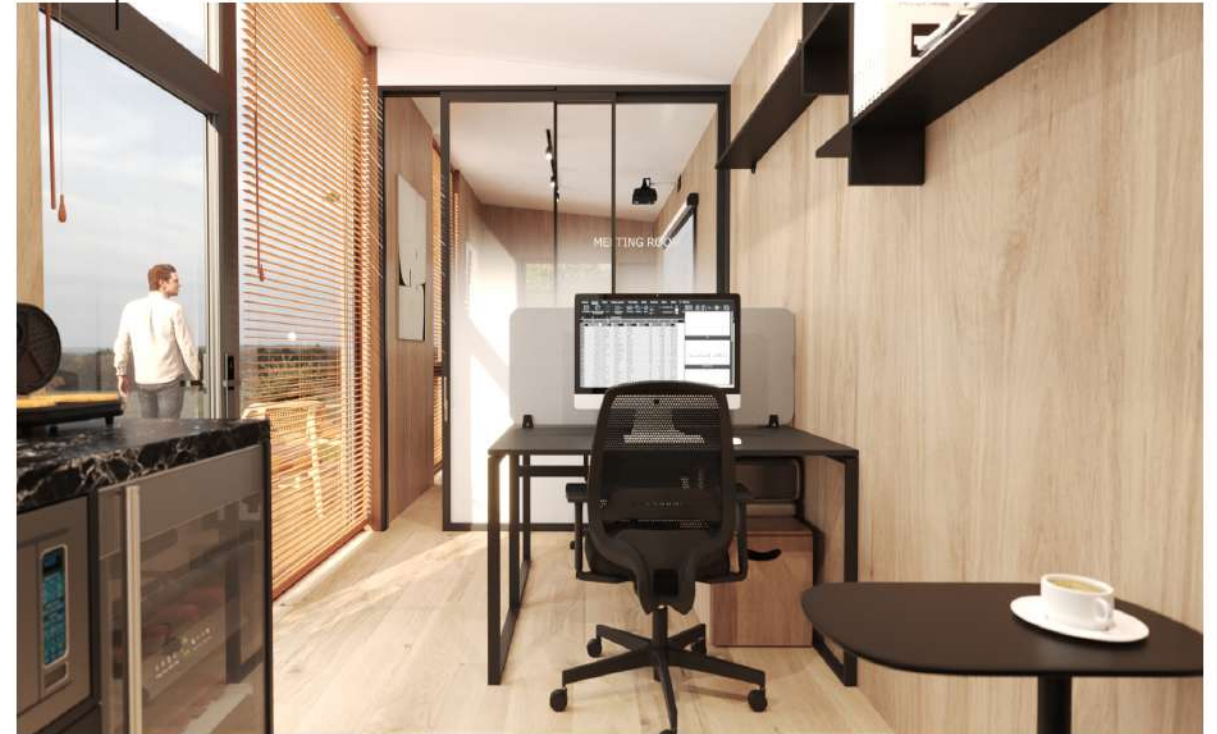
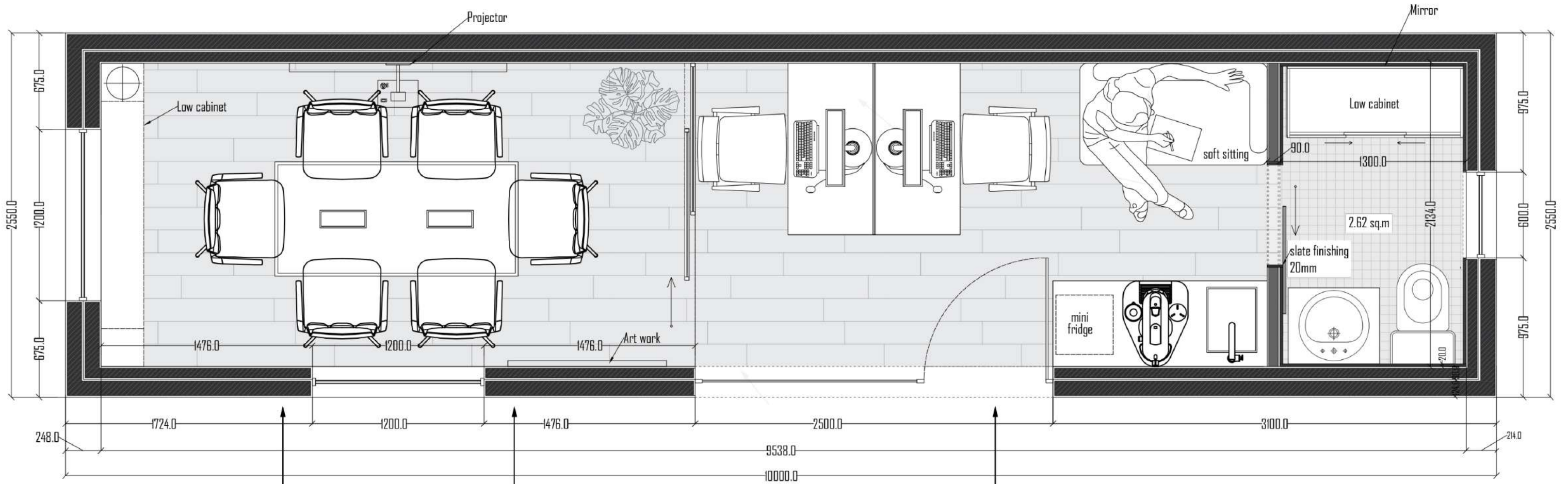
The living space for a family encompasses two connected containers linked by a glass corridor, covering an area of 56.6 square meters. This innovative design includes a living room, a kitchen, and separate bathrooms. Furthermore, the house is complemented by a terrace of approximately 30 square meters, serving as a recreational area. To save space, the project incorporates a lifting bed and walls.

Tiny office project



A walkthrough

This compact container office, encompassing a total area of 20 square meters, features a workspace, conference room, fully equipped kitchen, and restroom. Designed to accommodate two co-workers, it is also suitable for business meetings and small conferences. The interior utilizes plywood to cultivate a cozy ambiance. For thermal insulation, Structural Insulated Panels (SIP) have been employed, ensuring energy efficiency. The facade is finished with natural wood and premium Corten steel, enhancing both aesthetics and durability.



10

Miscellaneous

AutoCad, 3ds max,V-Ray, Photoshop

A Walkthrough

In these works, I have portrayed the enchanting realm of the forest, inhabited by fairies, elves, and woodland spirits. Utilizing my programming skills, I have crafted a fantastical world that transcends our everyday experiences.



Miscellaneous #10



portfolio | 2024





Thank you!

 Ekabarbaqadze92@gmail.com

 +995558390432